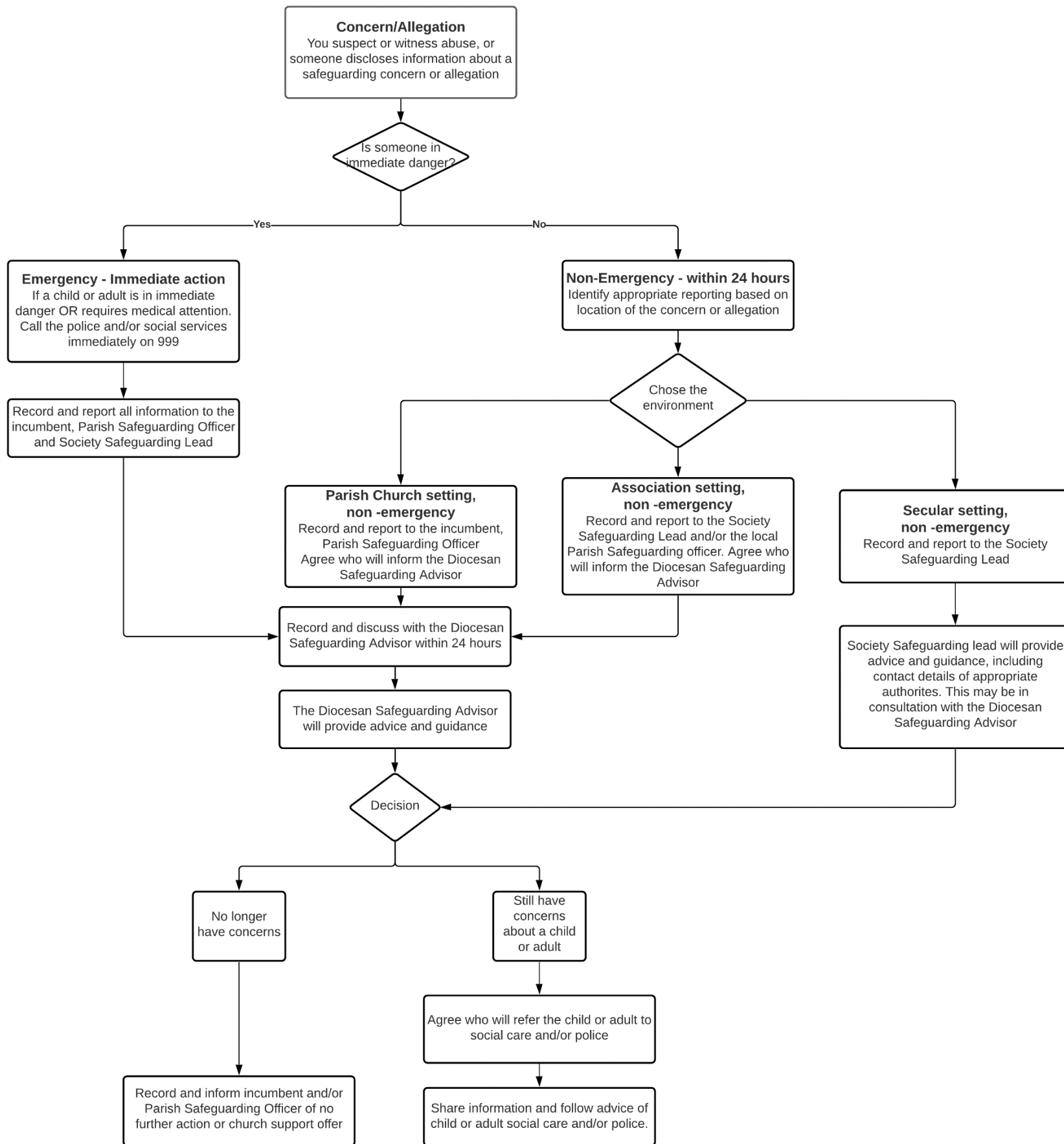


# The Central Council for Church Bellingers

## Responding promptly to a safeguarding concern or allegation

*NB The CCCBR Safeguarding Officers are unable to comment on individual cases*



### Safeguarding Principles

- RECORD ALL ACTIONS and store securely
- Remember the safety and welfare of any child or adult takes precedence over all other concerns. This includes confidentiality and personal loyalties
- Consider the support needs of all who might be affected by allegations of abuse – including you
- It is essential that all Tower Captains know who their Parish Safeguarding Officer is and understand the SGO role and responsibilities
- Guild/Association Safeguarding Leads are encouraged to nurture a relationship with their Diocesan Safeguarding Advisors. The DSA will be able to give advice and support in the event of a concern/allegation relating to a situation in a non-church environment.
- For advice call NSPCC on 0808 800 5000 or email [help@nspcc.org.uk](mailto:help@nspcc.org.uk)
- For definitions of abuse of vulnerable adults go to <https://www.nhs.uk/conditions/social-care-and-support-guide/help-from-social-services-and-charities/abuse-and-neglect-vulnerable-adults/>
- For definitions and signs of child abuse go to <https://learning.nspcc.org.uk/media/1188/definitions-signs-child-abuse.pdf>